

U.S. National Ice Center

PRESS RELEASE

FOR IMMEDIATE RELEASE

Contact: Evelyn V. Bowens
NIC.PAO@noaa.gov
301-817-3975



Iceberg A-68 Calves off Larsen-C Ice Shelf on the Antarctic Peninsula

July 13, 2017, Suitland, MD — The U.S. National Ice Center (USNIC) discovered a new iceberg has calved from the Larsen-C ice shelf on the east side of the Antarctic Peninsula. This iceberg, name A-68, is located at 67°55' South, 60°35' West, in the Weddell Sea. The iceberg measures 84 nautical miles on its longest axis and 25 nautical miles on its widest axis, and is slightly smaller than the state of Delaware.

A-68 was confirmed by USNIC Ice Analysts using the Sentinel-1 image (shown below) and longwave infrared imagery from the Visible Infrared Imaging Radiometer Suite (VIIRS) aboard the NOAA/NASA Suomi National Polar-orbiting Partnership (NPP) satellite.

A-68 is expected to drift east-northeast along the Antarctic Peninsula in the Weddell Gyre over the next several months. It will likely fracture into smaller bergs before drifting far enough north to enter the Antarctic Circumpolar Current.

Iceberg names are derived from the Antarctic quadrant in which they were originally calved. The quadrants are divided counter-clockwise in the following manner:

- A = 0-90W (Bellingshausen/Weddell Sea)
- B = 90W-180 (Amundsen/Eastern Ross Sea)
- C = 180-90E (Western Ross Sea/Wilkesland)
- D = 90E-0 (Amery/Eastern Weddell Sea)

When first sighted, an iceberg's point of origin is documented by USNIC. The letter of the quadrant, along with a sequential number, is assigned to the iceberg. For example, C-19 is sequentially the 19th iceberg tracked by USNIC in Antarctica between 180-90E (Quadrant C). Icebergs with letter suffixes have calved from already named icebergs, where the letters are added in sequential order. For example, C-19D is the 4th iceberg to calve off the original C-19 iceberg.

Iceberg positions are analyzed weekly and are available on the USNIC webpage at:
<https://usicecenter.gov/Products/AntarcIcebergs>

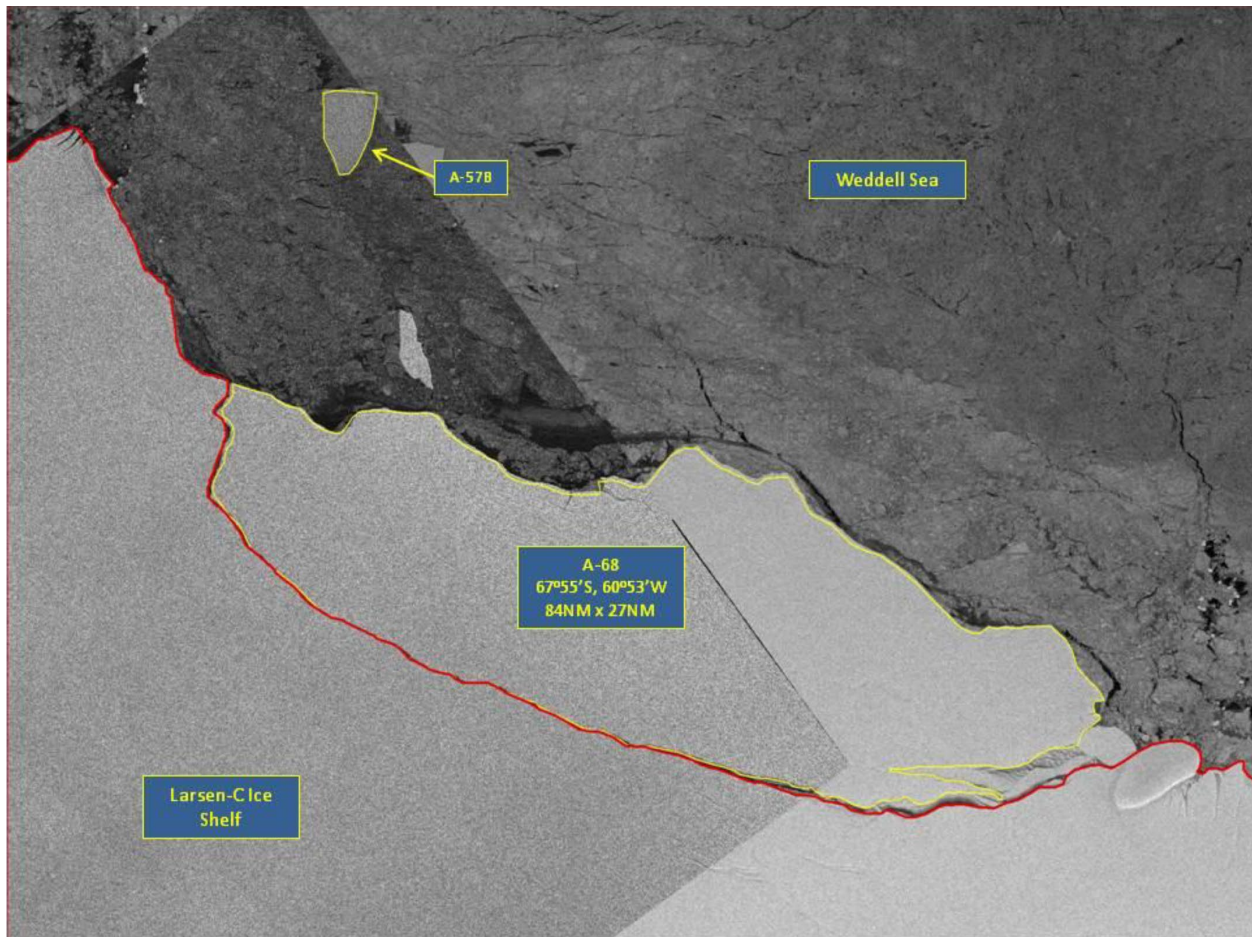


Figure 1: Sentinel-1 image of A-68 dated July 12th, 2017 (Copyright © 2017 ESA. All rights reserved.)

USNIC is a multi-agency center—subordinate to Naval Meteorology and Oceanography Command—operated by the Navy, NOAA, and Coast Guard which provides global to tactical scale ice and snow products, ice forecasting, and related environmental intelligence services for the United States government.

Naval Meteorology and Oceanography Command directs and oversees more than 2,500 globally-distributed military and civilian personnel who collect, process and exploit environmental information to assist Fleet and Joint Commanders in all warfare areas to make better decisions faster than the adversary.

For more information, please contact:

U.S. National Ice Center
Command Duty Officer
E-mail: nic.cdo@noaa.gov
Voice: (301) 943-6977

Visit us on Facebook at: <https://www.facebook.com/usnatice/>

